



**University of
Nottingham**

UK | CHINA | MALAYSIA

Applying to competitive universities

**Sian Griffiths
Student Recruitment
Officer**



Aims

- Understand the term 'competitive university'
- Understand the different university selection processes
- Explore how to demonstrate your skills and experiences





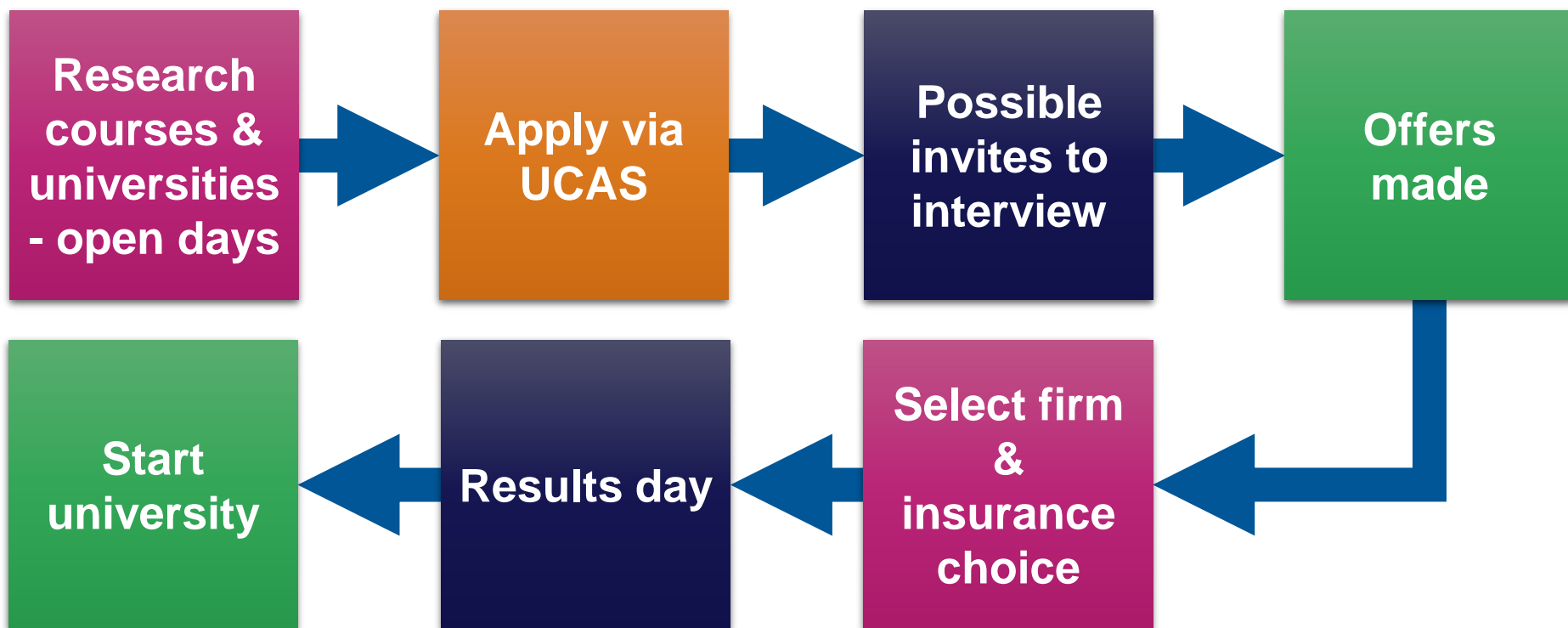
University of
Nottingham

UK | CHINA | MALAYSIA

Understand the term 'competitive university'



UCAS Application process





**University of
Nottingham**

UK | CHINA | MALAYSIA

Volume of applications

**Why are certain universities
and courses competitive?**

**Leading to a
profession**

League tables

Reputation



**University of
Nottingham**

UK | CHINA | MALAYSIA

In 2017 how many applications did these universities receive?

University of Manchester

63,950

University of Cambridge

62,480

47,485

The University of Edinburgh

17,235

The University of Nottingham



University of
Nottingham

UK | CHINA | MALAYSIA

In 2017, how many applications per acceptance did these universities have?

London School of Economics

11

University of Oxford

10.8

8.4

University of St Andrews

6.3

University of Surrey



**University of
Nottingham**

UK | CHINA | MALAYSIA

University selection processes



UCAS Application

- GCSE
- A Levels
- National admissions test
- Personal statement
- Reference
- Interviews





Example – Veterinary Medicine

GCSE:

- Five GCSEs at grade 7*

A level:

- AAB*

Personal Statement:

The schools looks at 6 key areas within he personal statement:

- Care
- Compassion
- Competence
- Communication
- Courage
- Commitment

Work Experience/Situational Judgment

*Subject specific grades required



National admissions test

- UCAT, BMAT, LNAT
- Test your aptitude
- Tests skills such as verbal reasoning
- Tests need to be completed within set deadlines



Four people H, I, J, K are a Doctor, a Manager, a Teacher and a Lecturer, not necessarily in that order. They each own a different type of vehicle.

H is a Doctor

J owns a sports car

K owns an electric car

The person who owns a motorbike is not a teacher

The manager polishes her scooter every weekend.



Which of the following **MUST** be true?

K is a Teacher

J is a Teacher

I is a Manager

K is a Manager



Top tip

- This section assumes familiarity with numbers to the standard of a good GCSE pass. A calculator is available.
- If some answers have a wide range, try estimating some details to find the approximate answer.
- Try to understand the scenario first to help you identify the crucial information.



The table gives information about the cost of buying one leaflet from a printing company. VAT is charged at 20% of the total order.

	Number ordered				
	1-9	10-49	50-199	200-599	600+
Single sided black/white	70p	60p	40p	30p	20p
Double sided black/white	£1.30	£1.00	70p	55p	40p
Single sided colour	£1.60	£1.10	80p	60p	50p
Double sided colour	£2.90	£2.00	£1.40	£1.00	90p



Quantitative reasoning

Karin buys 150 single sided black and white and one and a half times as many single sided colour leaflets. The total cost, including VAT is:

£222

£234

£288

£330

£342



Top tip

- Work through the mnemonic SCANS when looking for a pattern within the shapes:

S – Shape

C – Colour

A – Angle/arrangement

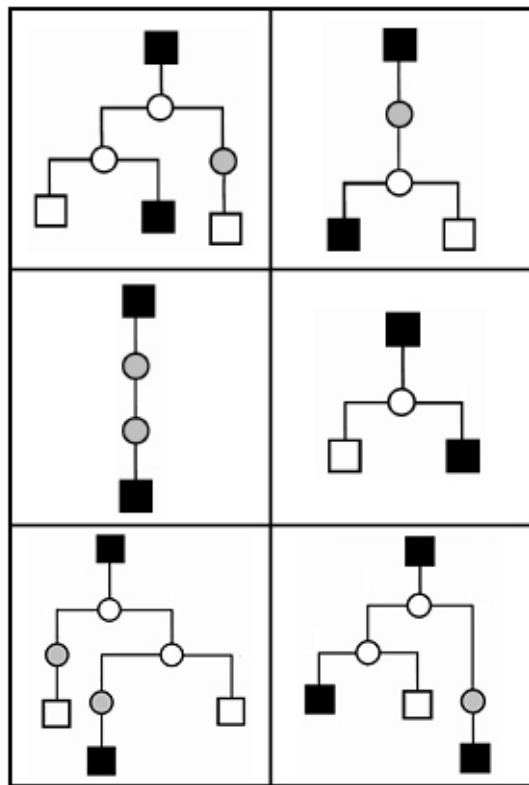
N – Number of
(sides/shapes/intersections)

S – Symmetry

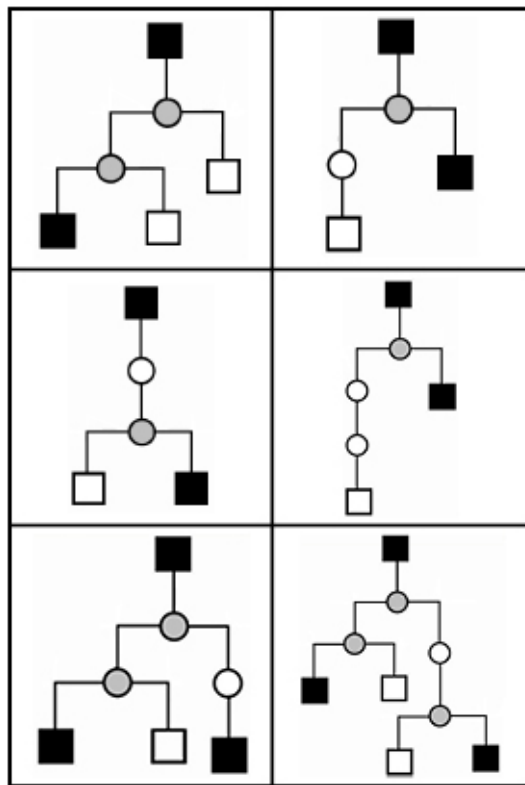


Abstract reasoning

Set A

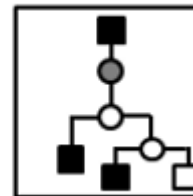


Set B

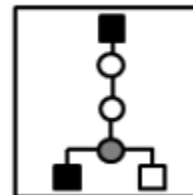


Which of the following
test shapes belongs in
Set A?

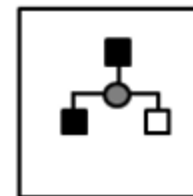
☐ A.



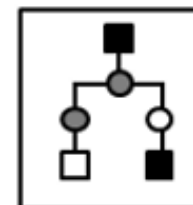
☐ B.



☐ C.



☐ D.





Interviews

- Each university will have a different format
- Often used for courses linked to a profession
- Do your research
- Preparation is key



Interviews activity

Work in pairs and discuss each of the following interview questions

- Why might a university ask this? What are they looking for?
- Could you give an answer? If not, is there anything you can do to prepare for this type of question?





Interview questions

- Briefly describe a topic related to this degree course that you find interesting and why?
- What do you hope to achieve from studying this degree subject?
- Why do you want to study it here?
- How do you think that you will manage the transition from your current studies to degree level study?



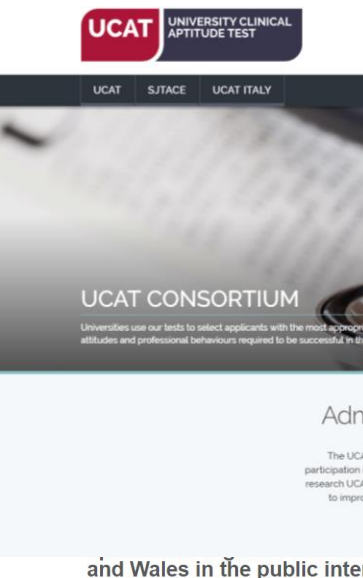
Interview tips

- Dress smartly or appropriately
- Smile and be confident
- Be clear and articulate
- Try to appear relaxed
- Prepare answers but don't over-rehearse
- **Remember** – universities want good students, but they need to make the right impression on you too!





Sources of information



GCSE 20% | A-level 40% | LNAT 40%

1.2 Academic criteria

All applicants must take the Law National Admissions Test (known as LNAT); see <http://www.lnat.ac.uk/> for details and test deadlines.

The LNAT test includes both an exam and short essay component. The essay will be read and assessed by University of Bristol staff. Within the essay section, we look for candidates who can demonstrate the ability to make and sustain a persuasive argument, relevant use of background reading and general knowledge, and a strong command of language.

The overall LNAT grade used by the University uses the following weightings:
60% exam and 40% essay.

1.3 Personal statement criteria

- **Demonstrated interest in and commitment to the study of Law**
- **Evidence of analytical skills, independent thinking and communication of ideas**

SEARCH

ON TEST DAY YOUR FUTURE

APPLY TO TAKE THE TEST

REGISTER NOW

IMPORTANT DATES

Don't miss the important deadlines!

FIND OUT MORE

SAMPLE PAPERS

Download sample tests on this site....

FIND OUT MORE

RESULTS

The universities see your results before you do...

FIND OUT MORE

LNAT BENEFITS

A test of aptitude rather than educational achievement....

FIND OUT MORE



**University of
Nottingham**

UK | CHINA | MALAYSIA

How to talk about your skills and experiences

Interest in subject

**Intellectual
curiosity**

**High standard of
written English**

Personal statement

**Reading and
research
beyond the
curriculum**

**Impact of
studying HE**

**Study and
analytical skills**



Examples are key

Demonstrate

Give specific examples and evidence what you are saying.

Evaluate

Express your opinion concerning any research/reading/work experience you have done.

- Do you agree or disagree with a particular argument or hypothesis?
- Do you think a particular approach in a working environment is successful/ethical/cost effective?
- How does this apply to your course?
- How will you use it?
- Are you keen to learn more – is there a module that will focus on this topic?



Situation Whilst volunteering at a primary school

Task

(Demonstrate)

I worked with students as a tutor and mentor, providing mathematics support for students

Action

(Demonstrate
and Evaluate)

I worked with small groups of primary school students, using resources and materials to provide an overview of a topic. Through using these resources, I developed communication skills, breaking down a subject and providing examples.

Result

(Evaluate)

The students improved their understanding of subject areas, resulting in them achieving higher marks in the maths test.

Top tips

- Start early and research
- Competitive factors extend beyond the volume of applications
- Be aware of different admissions processes at each university
- Complete further reading and activities
- Provide specific examples, avoid generalisations





University of
Nottingham

UK | CHINA | MALAYSIA

Sian Griffiths Student Recruitment Officer

Experience our award winning UK
campuses in 360 degree images and videos

nottingham.ac.uk/virtualnottingham



@uniofnottingham

THE  TIMES
THE SUNDAY TIMES
GOOD
UNIVERSITY
GUIDE
2019

SPORTS
UNIVERSITY
OF THE YEAR

THE  TIMES
THE SUNDAY TIMES
GOOD
UNIVERSITY
GUIDE
2019

INTERNATIONAL
UNIVERSITY
OF THE YEAR